



TECHNOLOGICAL INNOVATION

GARAGE DOORS
AND PATENTED LOCKING
SYSTEMS

INDICE



COMPANY
pag. 6

PATENT
pag. 8



PLANA MODELS
pag. 22

CLASSIC MODELS
pag. 34



OVERBAS DOORS
pag. 46

COLORS AND SURFACES
pag. 52



ACCESSORIES
pag. 62

TECHNICAL SECTION
pag. 66



WARRANTY
pag.78





COMPANY

Overlap mission and corporate value

Overlap manufacturing operation was established on December **2013** as part of the Delta SpA group of companies. Delta SpA was created in **1972** as a manufacturer of rubber and polyurethane components and is now a world **leader** thanks to its specific knowledge and the technologies developed in this industry.

Specifically Delta Overlap **mission** is the development of the Overlap technology for the garage door residential market and extend the use of this patented technology to other areas like the industrial and the technical domain.

The client in the first place

Overlap is already a leading manufacture and industry reference within the high end **residential garage** door market with a dedicated production facility and highly skilled staff.

Our team is an added value.

PATENT

Overlap is an innovative concept that does not require the ceiling tracks and reduces the space occupied inside the garage. The operator is housed in the upper beam of the door frame.

Overlap functioning

This solution operates the two sections of the door without the need of the tracks inside the garage where the first section acts as the track and rail for the second section that follows beneath.

The garage doors with Overlap patented technology





Traditional sectional garage door

1 Ceiling rails

When the traditional sectional garage door opens it moves parallel to the ceiling along the tracks which are fixed on the ceiling which then remain in place even when the door is closed.

2 Operator

The motor is also fixed to the ceiling and takes considerable space inside the room.

3 Spring operated

The traditional garage door opens and shuts with the help of metal springs which are sized for specific open/close cycles, are under mechanical stress and undergo wear and tear with the time.

4 Appearance

The presence of many individual sectional panels require various hinges and hardware on the internal side of the garage and do not enhance the appearance on the external side too.



Overlap door

1 Trackless

This is the main feature that makes Overlap a unique selling proposition. Thanks to its self-standing frame and the two stackable sections, Overlap does not require the unsightly ceiling rails.

2 Operator positioned inside the frame

The motor is housed inside the upper beam of the door frame, does not need sliding structures and does not reduce the net passage (height) of the garage door.

3 Counterweight system

The mechanical movement of the panels is provided by double counterweights on each side of the frame and as a consequence parts exposed to wear and tear are reduced to a minimum.

4 Appearance

This innovation makes a clean and orderly garage space both inside and outside and offer bespoke solutions in sizes and finishes.



*Full Glass
Transparent
top panel door
and satin
bottom panel*



Glass Panel
Transparent Glass

DESIGN - APPEARANCE

B-SIDE

*More
space
for your
space*



Inner Side
New Plana 40

*Engineered for
functionality,
appearance
and precision*

The attention to details, the manufacturing technology and the wide range of finishes and claddings result in an external appearance that fit easily in every type of house with an elegant and peculiar look. The charm of an Overlap door is unique and peerless.



Pietravera
Galatea

COM PLANA RITY

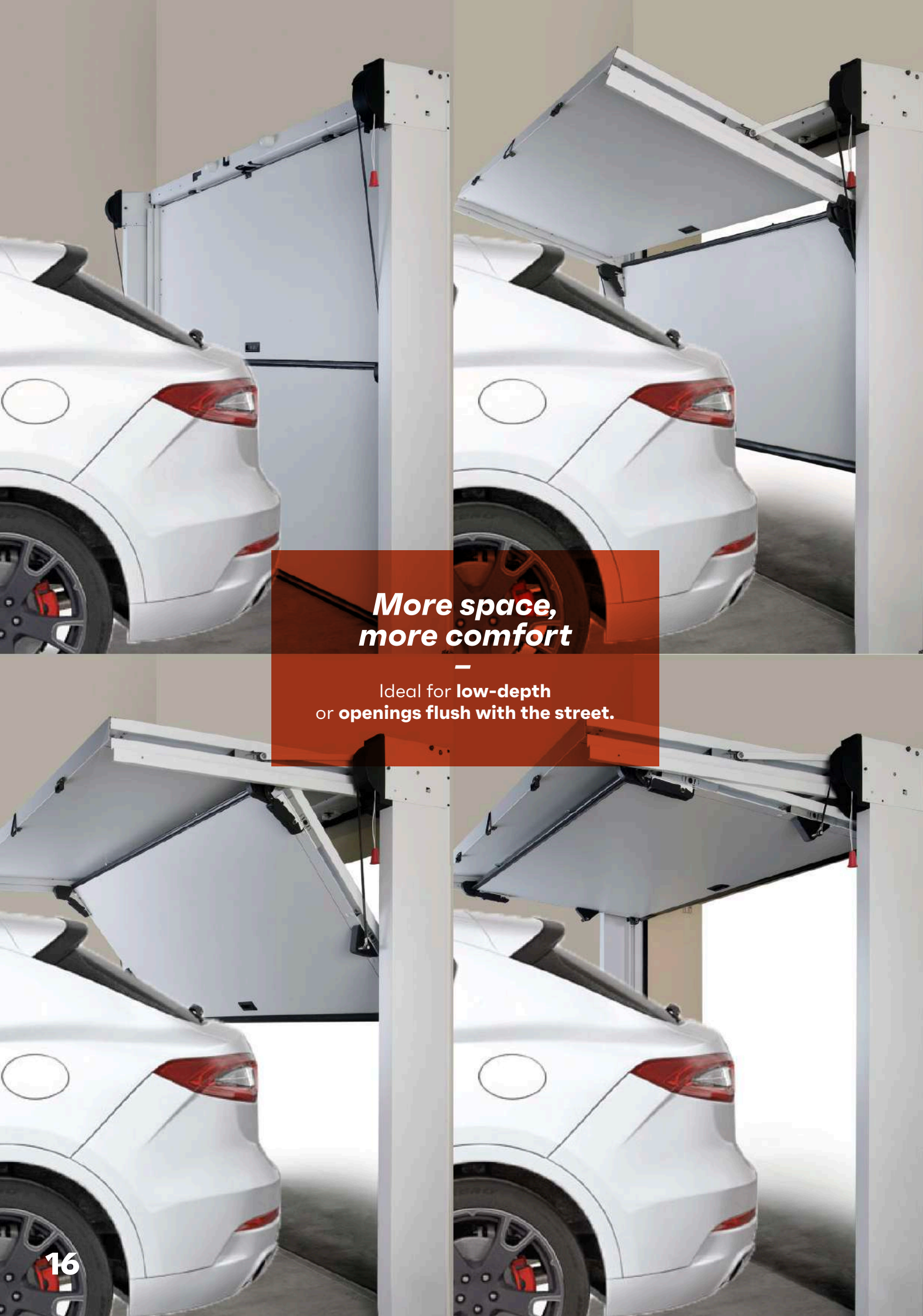
The attention to details is maintained both on the **inside** as well as **outside**. The trackless construction, the hidden operator, the white or anthracite frame of the internal finishes result in a pleasant and elegant solution. The internal side of the panels are spray painted white and on request the panels can be **customised** with other colours.

*The space that
creates a fine view*

The innovative Overlap system does not need tracks on the ceiling and halves the backroom needed when the door is open. Overlap is **space efficient** both inside the garage and the reduction of the net passage both in the height and the width is reduced at a minimum. When the door is open the reduction of the clearance is only 200 mm. Overlap is the ideal choice in presence of an inclined or a vaulted ceiling, ceiling with beams showing and side walls placed at an angle or curved.



Inner Side
New Plana 75



**More space,
more comfort**

—
Ideal for **low-depth**
or **openings flush with the street.**

Energy Efficient

The **electronically controlled** Overlap motorization drives one mechanical clutch linked to the counterweights. This design is **energy efficient**.

Overlap cuts out well **wind and water**, offer sound insulation when closed and quiet and smooth operation when opening and closing.

**Reduced energy
consumption and
thermal insulation**

Thermal transmittance
up to $U = 1,30 \text{ W/m}^2 \text{ K}^*$
(New Plana 75)

Thermal transmittance
up to $= 1,50 \text{ W/m}^2 \text{ K}^*$
(Classic, New Plana 40)

**value obtained for a close door
with behind wall installation.*

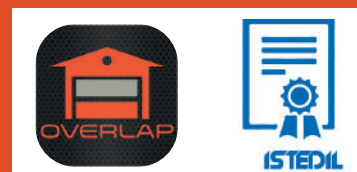




Color
7016
Anthracite Grey

- **Safety and technology**
- **Theft proof (door safety during operation)**
- **App for ios - Android**
- **Certified according to EN 1627 Class 2 break-in resistance**

Overlap boasts **high safety standards**. The locking system offer **theft-proof features** and the Overlap motor can be linked to any **alarm** or **electronic**, automatic management system in the house. The electric sensors in the motor prevent injuries when closing and the photocells inside and out offer **additional safety**.



The setting of the motor is carried out via Bluetooth app by **authorized service engineers**.

Overlap has passed the **testing** according to EN 1627 and has achieved class 2 resistance **against attempts of forcing the lock**. The continuous Overlap product development can now offer a garage door which is very difficult to break open with non-motorized tools. The certification is applicable to all models and sizes with panels in double sheet with polyurethane foam.

**FOR
THOSE
WHO LOVE
PURE
ITALIAN
STYLE**

1

mission possible

Overlap makes it possible numerous **customized solutions** to provide you with the garage of your dreams. The Overlap system is suitable also for non-garage environments when a technical access is needed and at the same time the appearance is important or there are **space constraints**.

3

Overlap listens to your ideas and gives shape to your project

bespoke
solutions

2

Overlap is made to measure and **customized** each time, with different materials, claddings and colours.



Plana Models

Overlap Plana offers beautiful garage doors solutions with unique features to get everything tidied up.

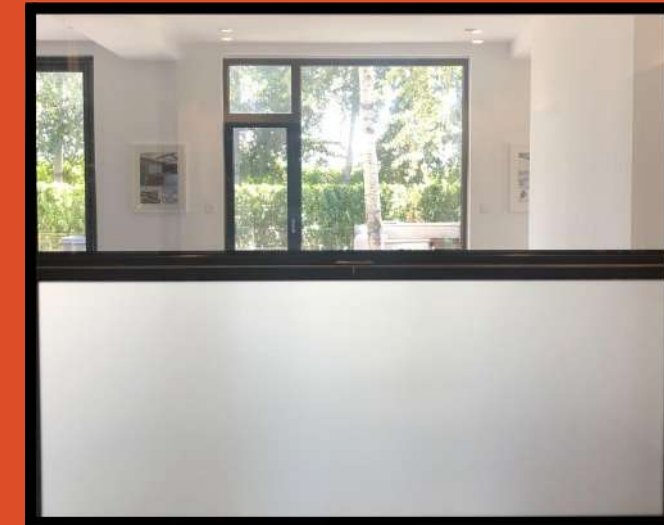
Overlap Plana is available with finishes:

- 1. WOOD**
- 2. COLOR**
- 3. MATERIAL**
- 4. FULL GLASS**
- 5. PIETRAVERA**

Wood
770 Yale Oak

Mod. Plana
Full Glass
Transparent Glass

Full Glass

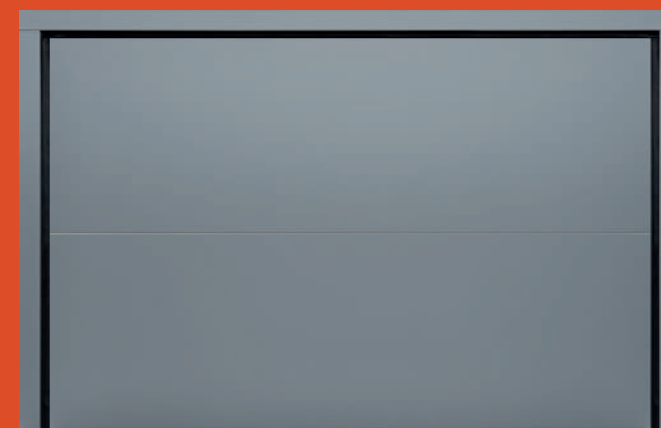


Overlap Full Glass, is made with safety glass and allow the day light to brighten your garage. Overlap Full Glass is a garage door with clear **glass**, **satin glass** and **tinted glass** suitable when you want natural light for your garage, working space or to create a showroom.

Color



Mod. Plana
Color
713 Metal



The finish **Color** for a modern and personal look with **different colours available.**



Mod. Plant
Wood
0932 Akro Terra



The finish **Wood**
enhances the warmth
of the wood with classic
solutions and refined
veins.

Wood

Material



The finish **Material** creates an innovative solutions with a marked aesthetic impact referring to the **burning volcanic rocks**, the chromatic variations of the Corten and the other available finishes.

Mod. Plana
Material
0794 Patina Bronze

Mod. Plana
Pietravera
Themis



Pietra vera



The **Pietravera** surface
offers a pleasant
aesthetic effect, thanks
to its natural beauty.

Classic Models

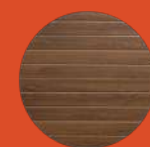
Overlap Classic offer options suitable for every house, modern or traditional, with a wide choice of finishes and colours that results in a unique appearance.



Air



Wide



Sound

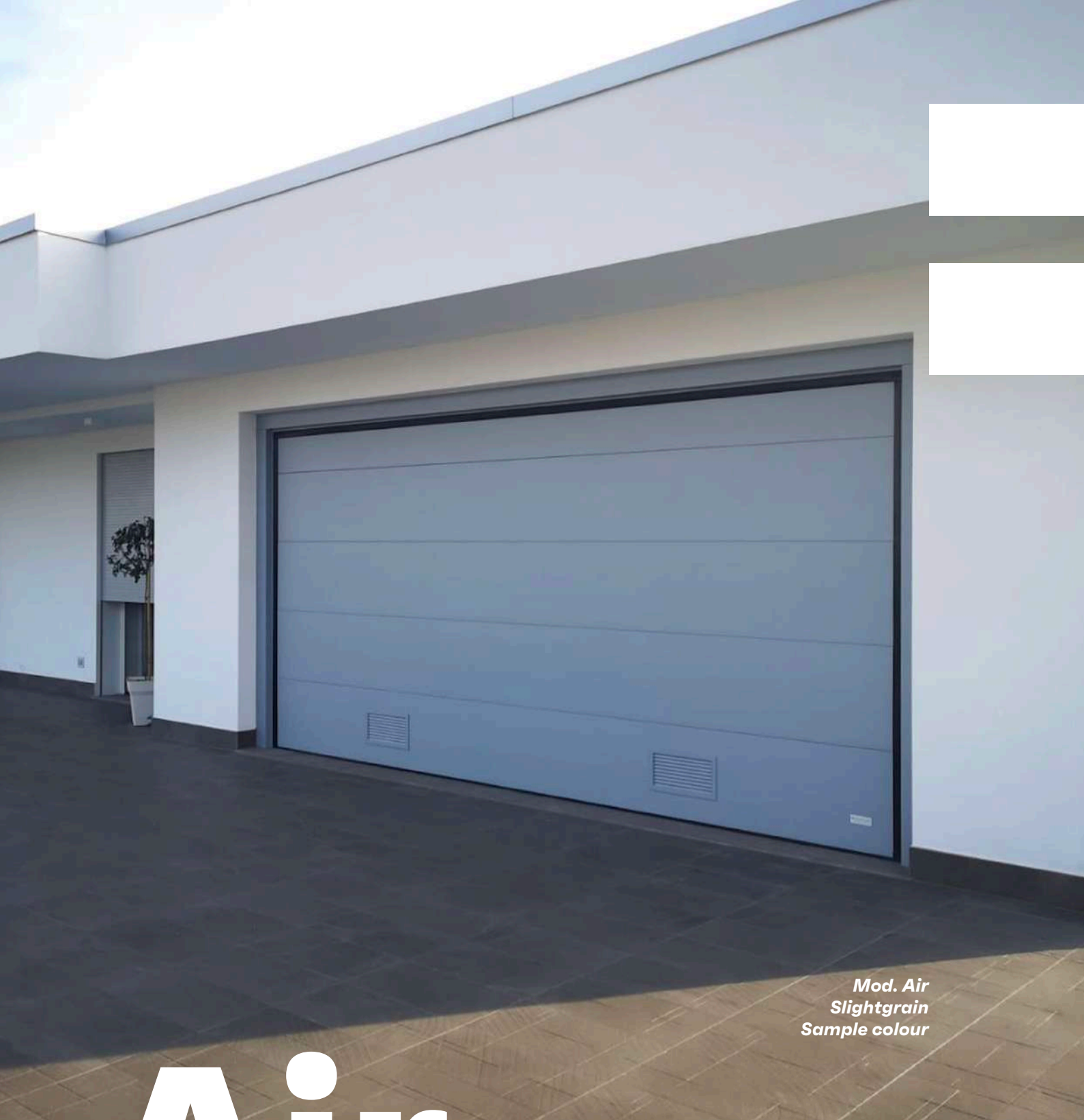


Wave



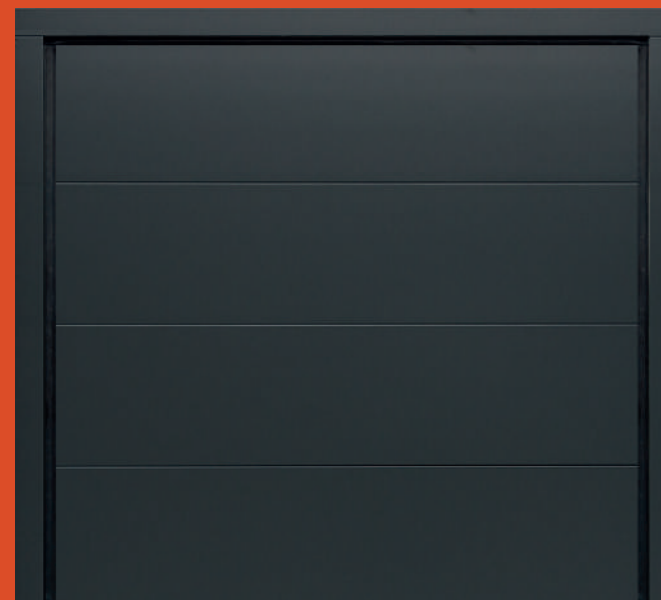
Box

Air
7016
Anthracite Grey



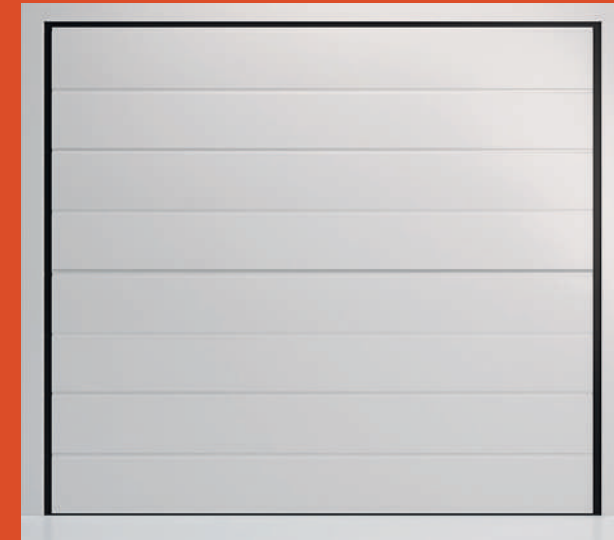
Air

*Mod. Air
Slightgrain
Sample colour*



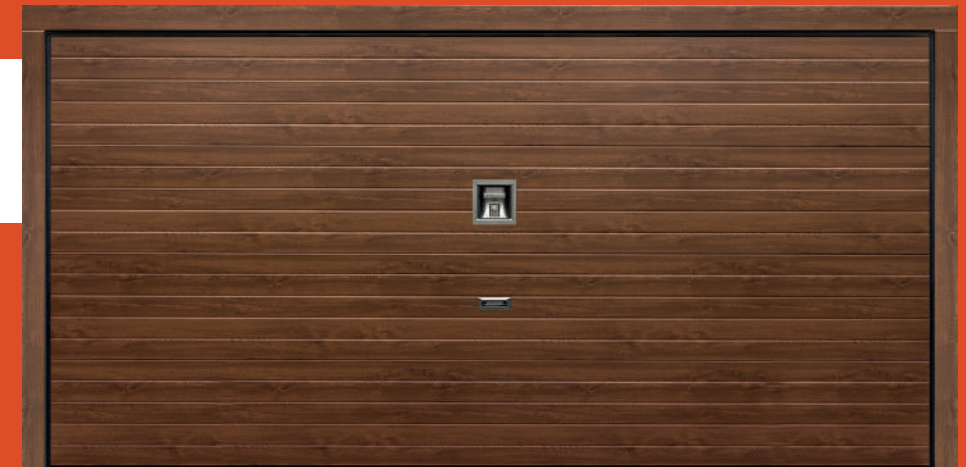
The combination of panels without grooves gives this door a **refined** and **minimal** effect.

Wide



In the **Wide** model the thickness of the groove accentuates the design giving it a **decisive character**.

*Mod. Sound
Woodstyle
Medium*



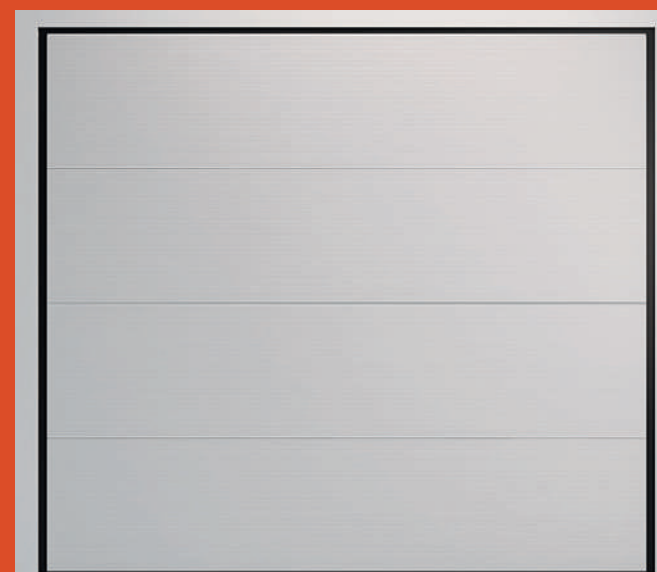
The creation of more
**grooves on the same
panel** enhances the
design.

Sound

Wave



Mod. Wave
Smooth
RAL 9006



The particular
processing of the panels
accentuates the design
giving it a **strong
personality.**



*Mod. Box
Woodstyle
Medium dark tint with
side-by-side pedestrian
door*

Box



The timeless elegance of the **drawers** makes the design suitable for even the most classic contexts.

Overbas Doors

*Overbas Plana
with wicket door
Color
7016 Anthracite Grey*

Overbas

*The Overlap up
and over garage door.*

All the advantages Overlap

1

Concealed
operator

2

Trackless
solution

3

Counterweights
movement

4

Approved
for break-in
resistance
Class 2*

*Feasible in all the
Overlap aesthetic Plana
and Classic Range*

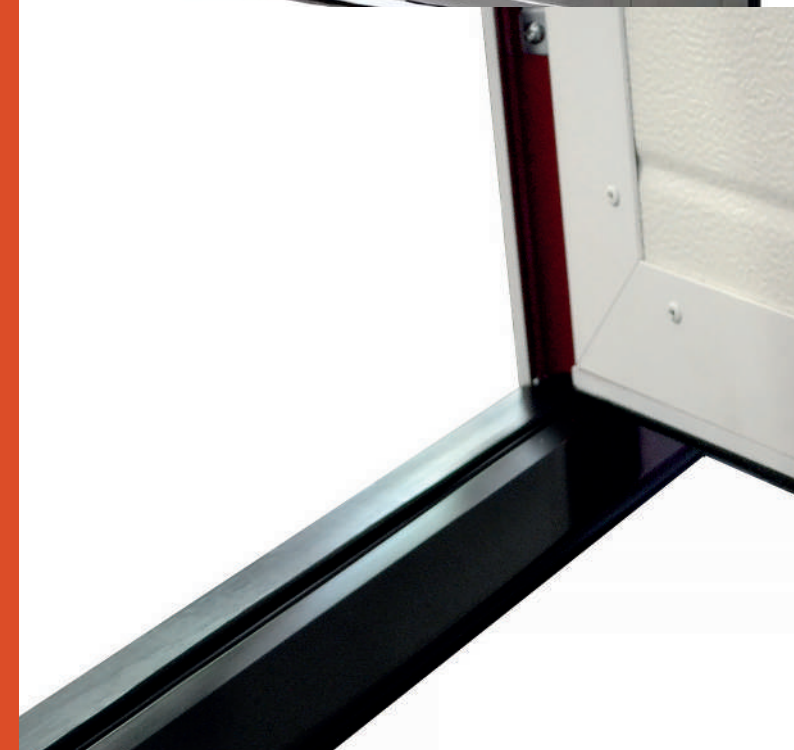


*Overbas Plana Material
with wicket door*



*Overbas Classic
with wicket door*

**The security feature is not
available with wicket door.*



Internal view

Threshold lowered

**wicket door.*

Concealed hinge



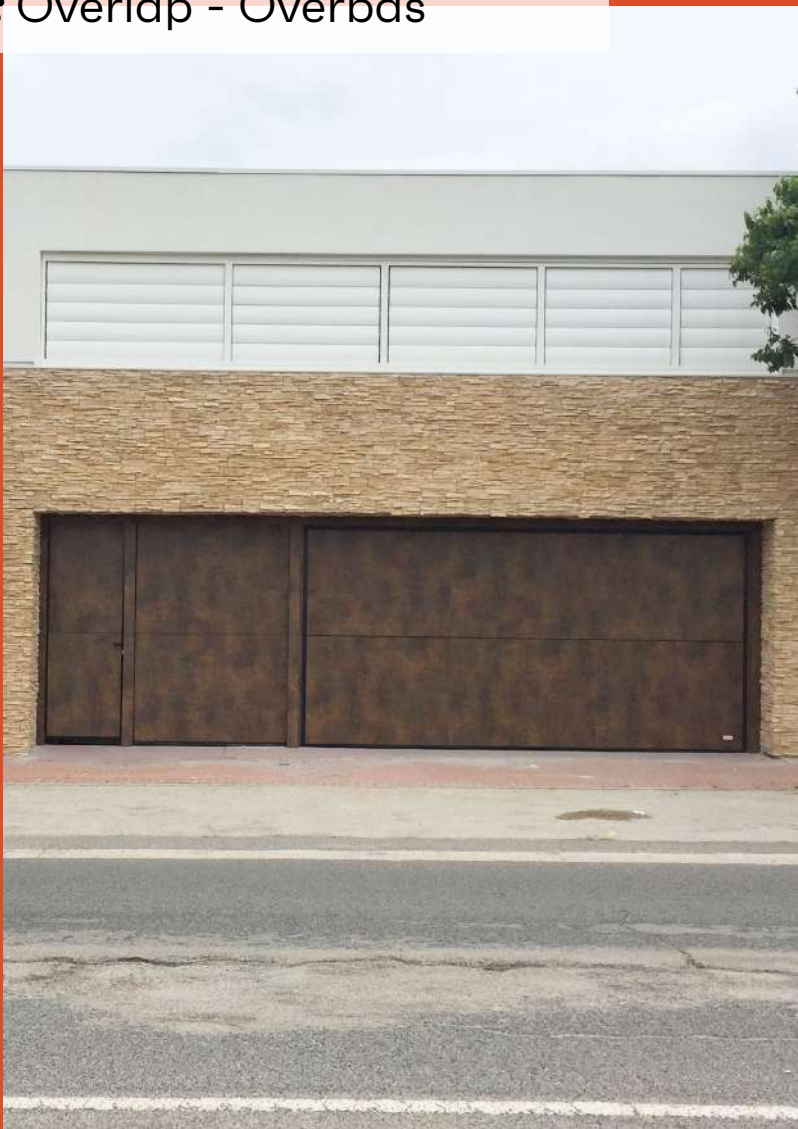
Between wall installation

This installation type is suited in case the wall opening does not allow fixing behind the opening. It is especially common in the case of a door replacement. Thanks to the self-supporting frame, Overlap doors with outer frame dimensions until can be directly fixed to sidewalls and over-wall with no other supporting component (e.g. Tubular, etc.) which is otherwise necessary for bigger dimension doors.

Installation types: Overlap - Overbas

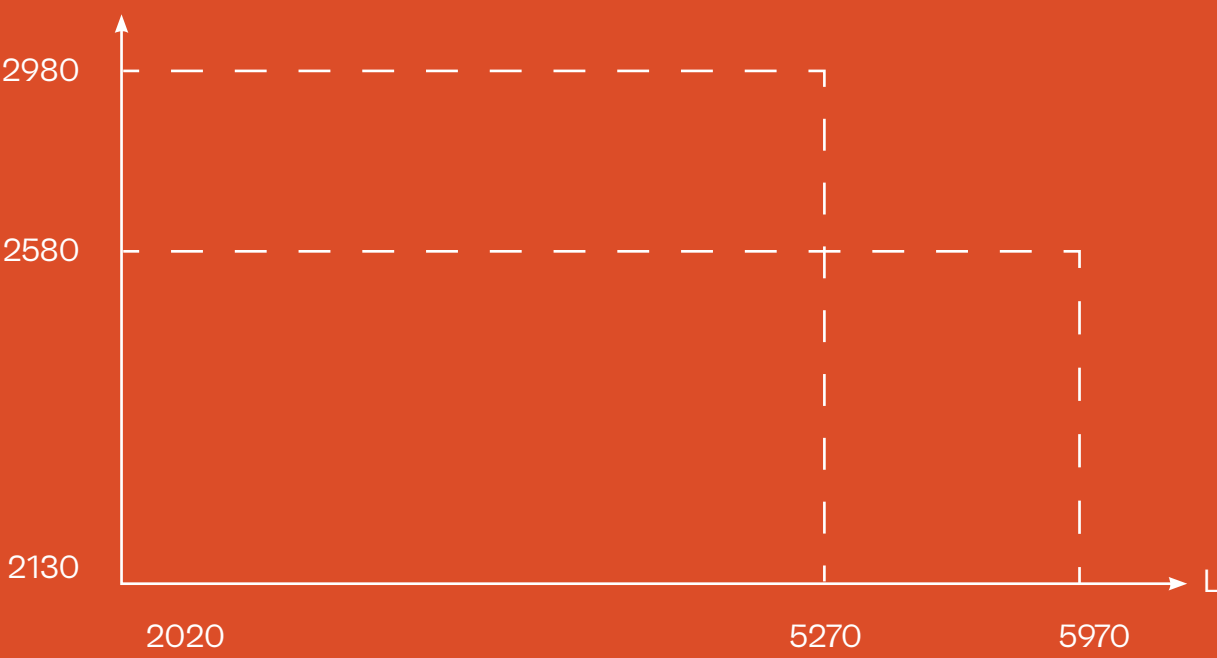
Behind wall installation

This installation is performed when the wall opening presents enough side-room and head-room. In this case, the door frame is anchored behind the wall and it is possible to maximize door clearance. This solution should be preferred as it allows a better thermal insulation of the garage.

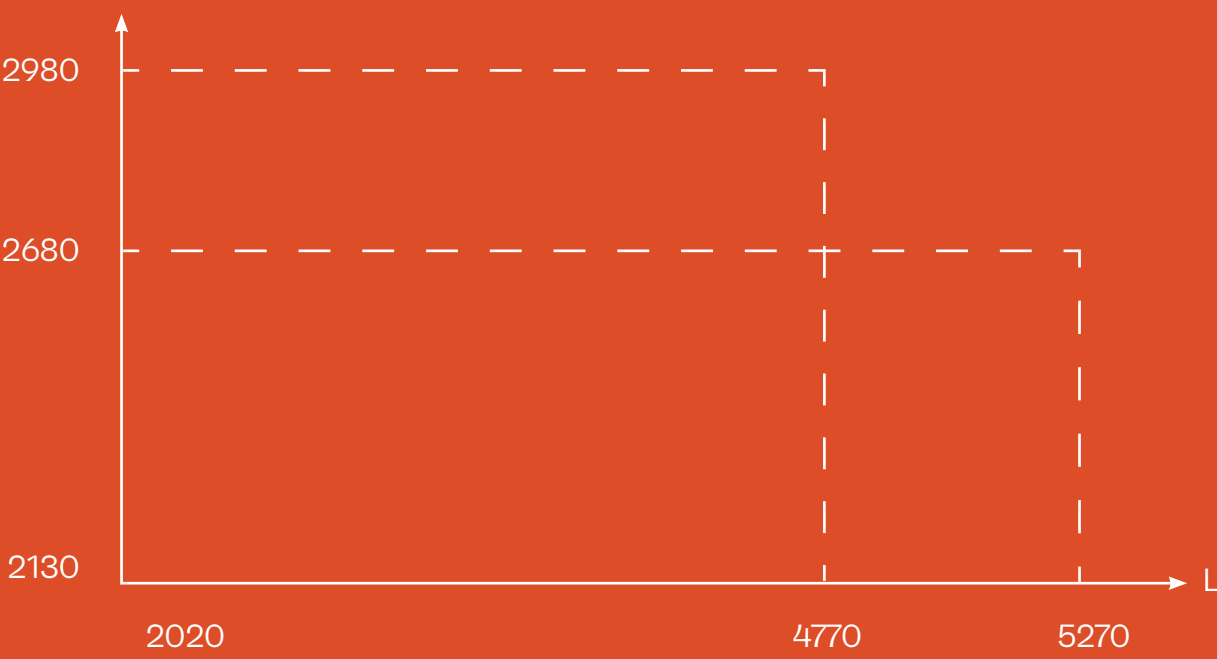


Sizes

Overlap and Overbas are always made to measure, both in width and height with steps of 50mm or 10mm (optional). Overbas in the non overflowing version is feasible for maximum size 3970mm to 2680mm. Different sizes are possible upon request.



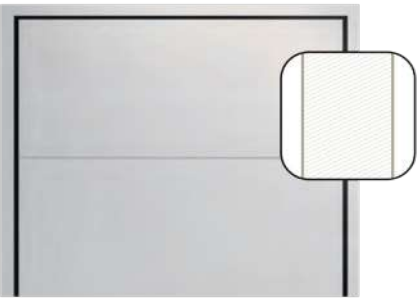
Overlap size table: outer frame size (mm)



Overbas size table: outer frame size (mm)

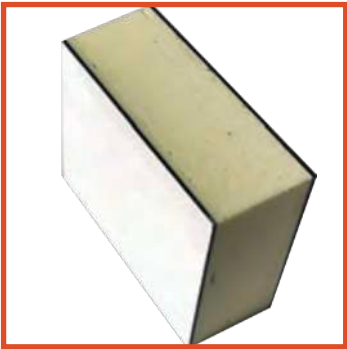
Colors and surfa ces

Plana Models Surfaces



PLANA

Laminate HPL
Steel
Pietravera
Glass



LAMINATE HPL

Wood



770 Yale Oak 0160 Dark Afro 0161 Light Afro 0922 Amazon 0925 Butterfly



0931 Almond 0932 Akro Terra 5171 Polar Oak New 5172 Marshland Oak

Material



0428 Cave 0429 Corro 0794 Patina Bronze

STEEL

Color



VETRO

Full Glass



Transparent Glass White Satin Glass

PIETRAVERA



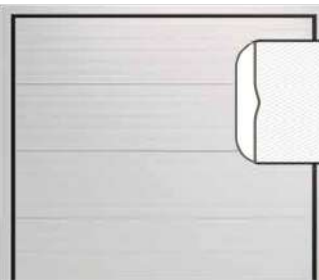
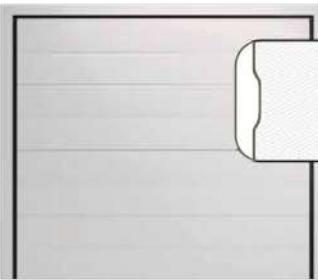
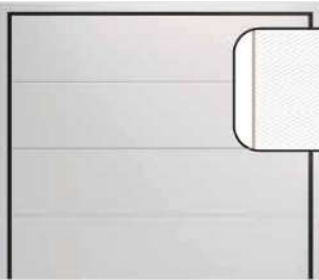
Galatea Eos Demetra Callisto Benerice Themis Sibilla



Hecate Hebe Gea Astrea Hera Veined White



Sur faces



AIR

Woodgrain
Slightgrain
Woodstyle
Woodstyle Plus



WIDE

Woodgrain
Slightgrain
Woodstyle
Woodstyle Plus

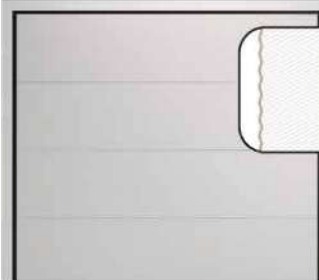


SOUND

Woodgrain
Slightgrain
Woodstyle
Woodstyle Plus



Classic Models



WAVE

Smooth



BOX

Woodgrain
Woodstyle



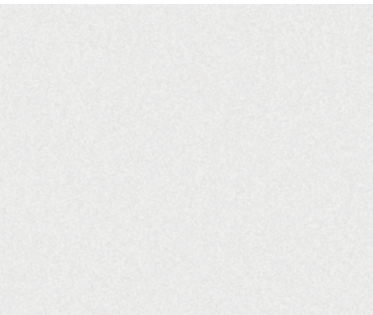
Superfici



Woodgrain
An embossed surface that reflots the textures of wood grain, a classic and external finish.



Smooth
A smooth and bright surface that intensify color and door style.



Slightgrain
A smooth surface with a little texture that gives to the color a modern style.



Woodstyle
A prepainted smooth surface which reflcts the color and grain of timber.



Woodstyle Plus
A prepainted smooth surface which reflects the color and grain of timber in the external and internal of panel.

Smooth - Slightgrain - Woodgrain

Overlap and Overbas are made in all RAL colors or sample colors (optional)

| | | | |
|-----------------------|--------------------|-------------------------|-----------------------------|
| | | | |
| 7035 Light Grey | 9002 Grey White | 7040 Window Grey | 9006 White Alluminium |
| | | | |
| 9016 Traffic White | 6009 Fir Green | 7016 Anthracite Grey | 8016 Mahogan Brown |

Woodstyle

| | | |
|-------|--------|-------------|
| | | |
| Light | Medium | Medium-dark |

Woodstyle Plus

| | |
|-------|--------|
| | |
| Light | Medium |



Inner Side + Spce - Problems

Accessories



**Fours channels
remote controls**



**GSM module for
door opening
and closing by
remote**

**External handle
in PlatinBronze
or PlatinSilver**



**Fixed windows
with aluminium
frame and glass
(transparent or
frosted)**



**Fixed
windows with
polycarbonate
pane with
pastic frame**



**Two channels
wired or
wireless
stainless-steel
keypad**



**Plastic
rectangular
ventilation
grill**



Flashing Light



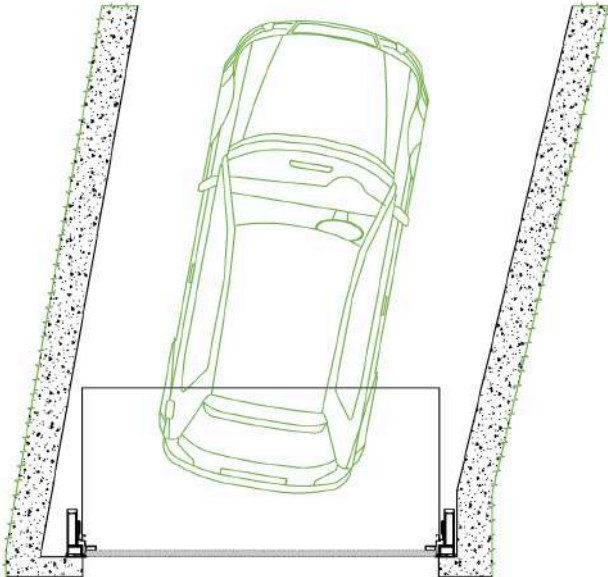
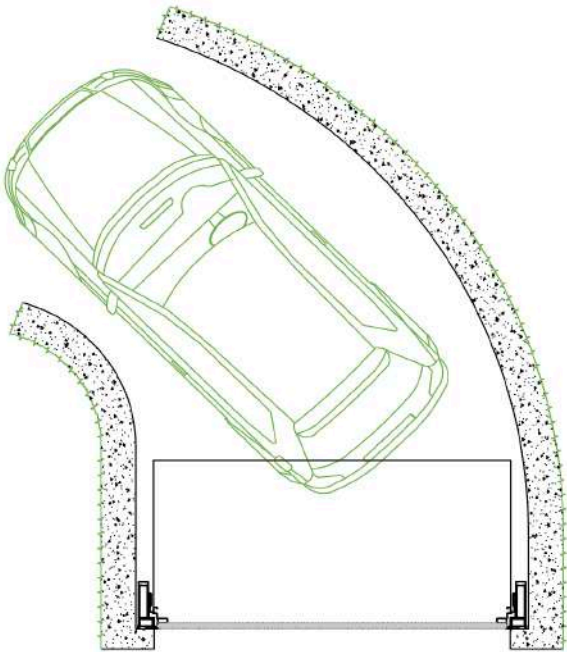
**Rectangular
aluminium
ventilation grill**



A close-up photograph of a white mechanical device, possibly a door handle or latch, with various screws and components visible. The image is partially obscured by a semi-transparent orange rectangle on the left side, which contains the text 'Technical Section'.

Technical Section

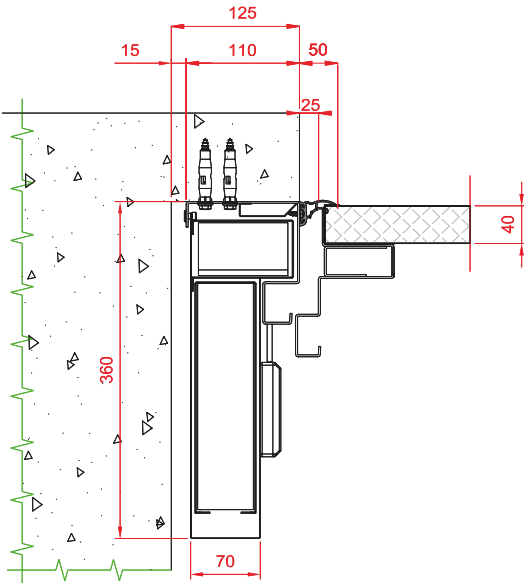
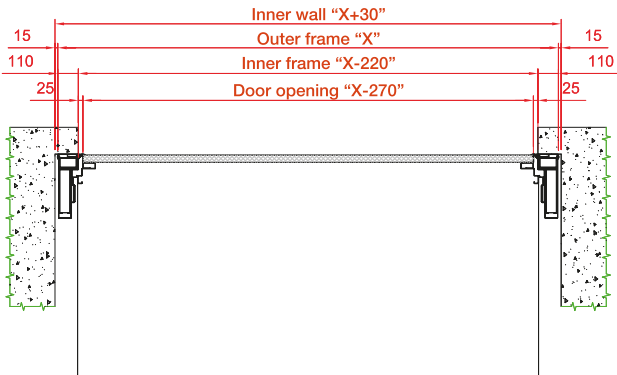
Overlap Solutions



Garage with curved side walls

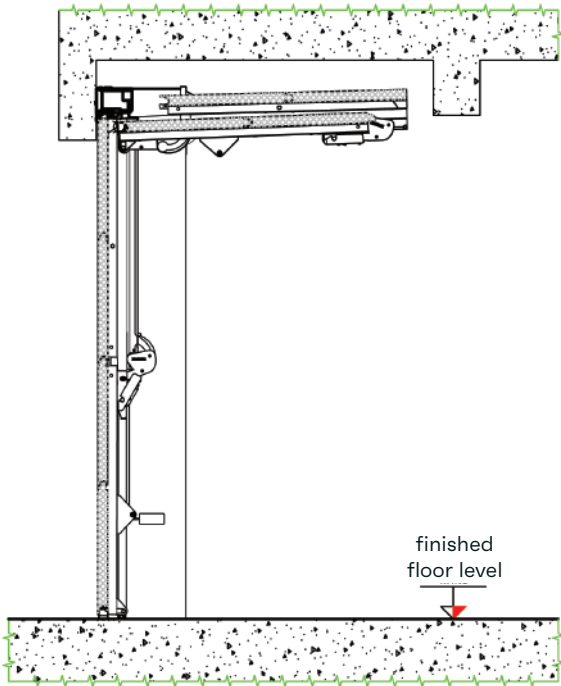
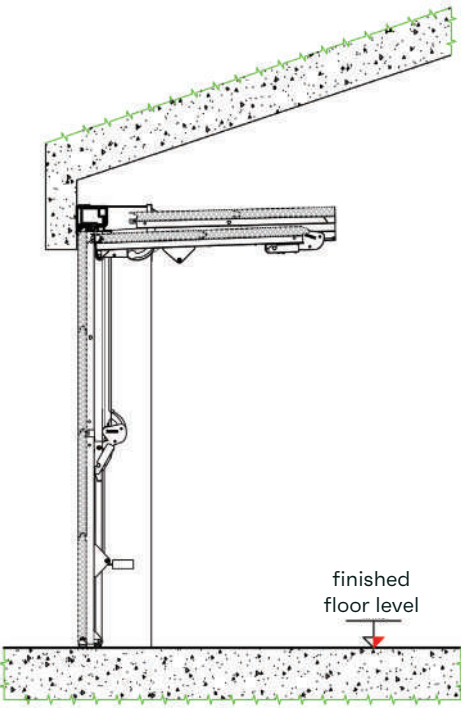
Garage with oblique side walls

Behind wall installation



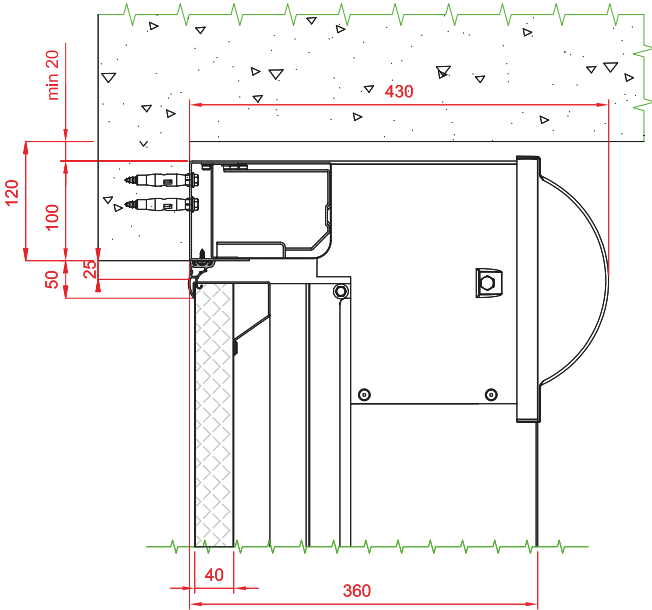
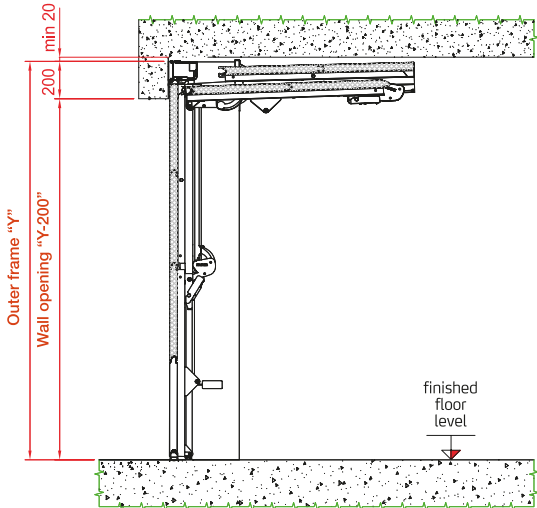
Horizontal section - general

Horizontal section - detail



Garage with started ceiling

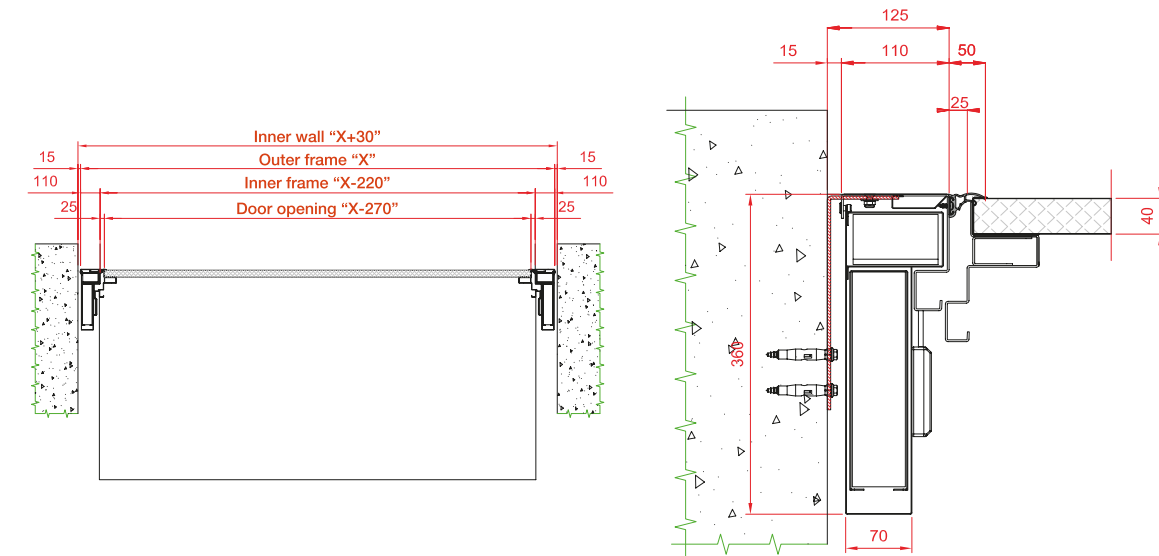
Garage with ceiling lowered by beam



Vertical section - general

Vertical section - detail

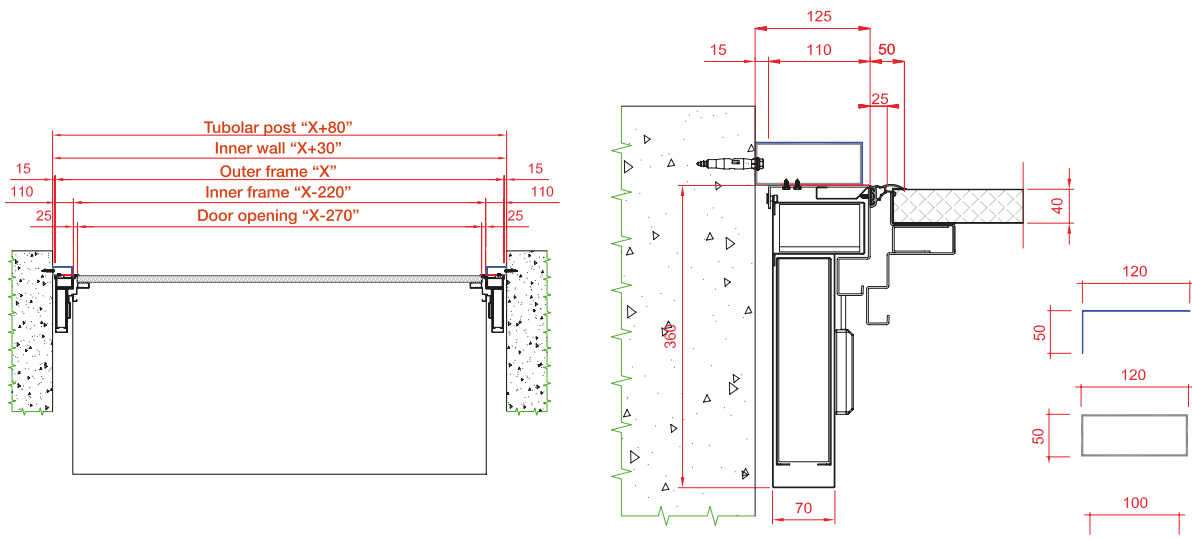
**Between wall installation, doors sectors
A-B-C-D (without tubulares)**



Horizontal section - general

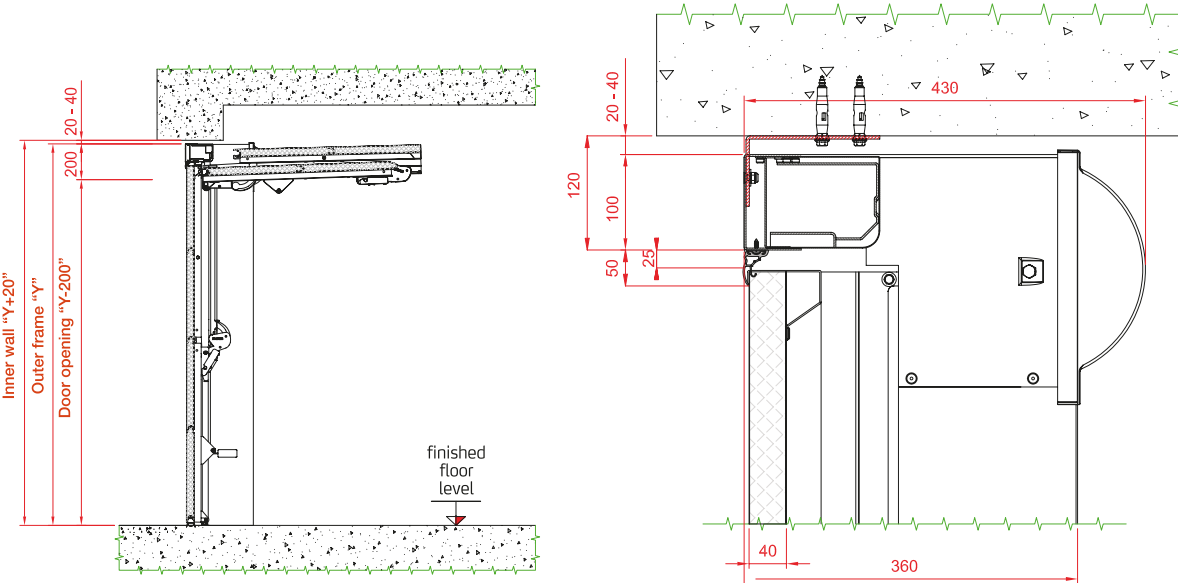
Horizontal section - detail

**Between wall installation, doors sectors
E-F-G-H-I (without tubulares)**



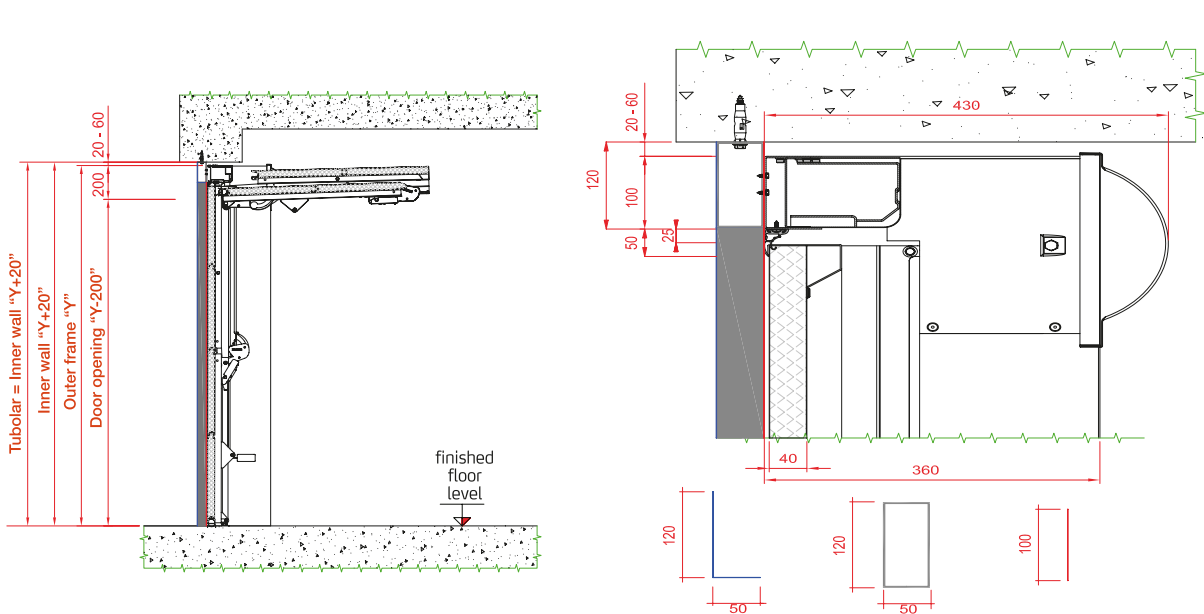
Horizontal section - general

Horizontal section - detail



Vertical section - general

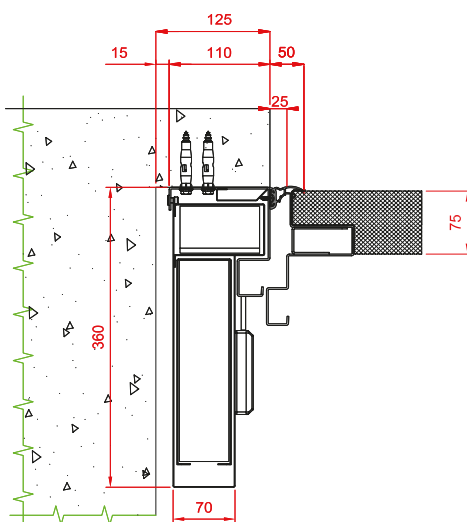
Vertical section - detail



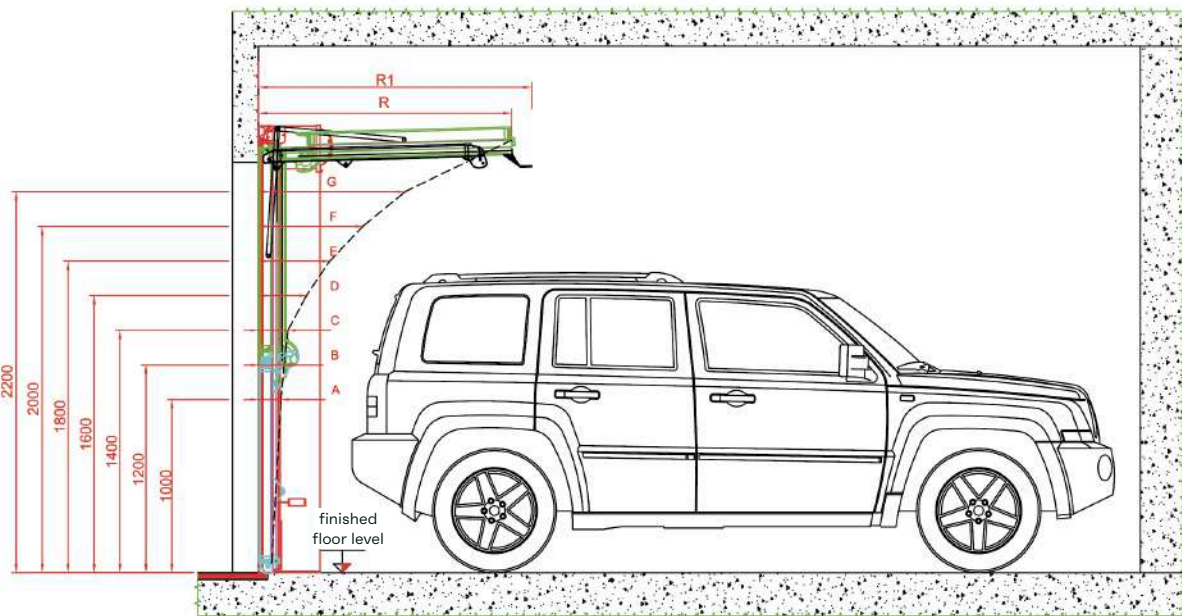
Vertical section - general

Vertical section - detail

(By way of example, only behind wall the installation)

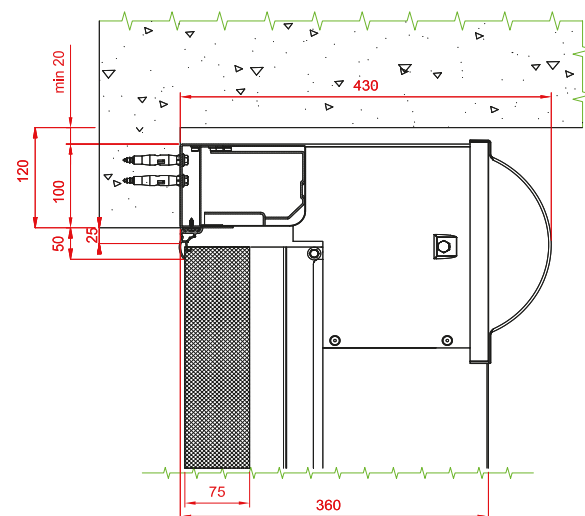
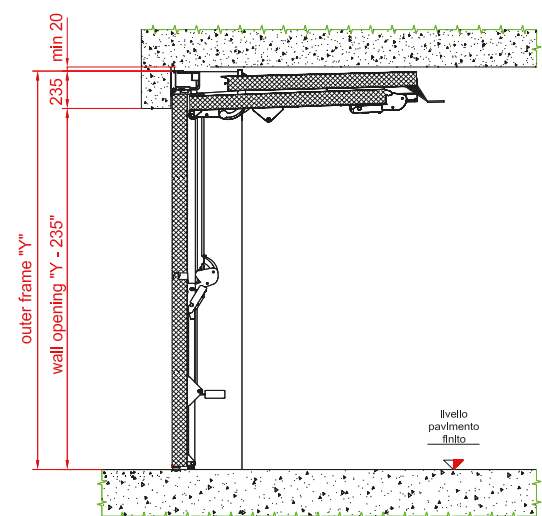


Encumbrances Overlap New Plana 75mm measures in mm



Horizontal section - general

Horizontal section - detail



| Over all frame | Door opening | A | B | C | D | E | F | G | R | R1 |
|----------------|--------------|------|------|------|------|------|------|------|------|------|
| | | 1000 | 1200 | 1400 | 1600 | 1800 | 2000 | 2000 | | |
| 2130 | 1930 | 149 | 194 | 319 | 487 | 725 | / | / | 1270 | 1350 |
| 2180 | 1980 | 147 | 186 | 300 | 460 | 685 | / | / | 1320 | 1400 |
| 2230 | 2030 | 145 | 177 | 281 | 432 | 646 | / | / | 1370 | 1450 |
| 2280 | 2080 | 142 | 169 | 261 | 405 | 606 | / | / | 1420 | 1500 |
| 2330 | 2130 | 140 | 160 | 242 | 377 | 566 | 776 | / | 1470 | 1550 |
| 2380 | 2180 | 138 | 158 | 227 | 357 | 536 | 741 | / | 1520 | 1600 |
| 2430 | 2230 | 137 | 155 | 213 | 338 | 505 | 706 | / | 1570 | 1650 |
| 2480 | 2280 | 135 | 153 | 198 | 318 | 475 | 670 | / | 1620 | 1700 |
| 2530 | 2330 | 133 | 150 | 183 | 298 | 444 | 635 | 896 | 1670 | 1750 |
| 2580 | 2380 | 131 | 148 | 170 | 278 | 412 | 603 | 847 | 1495 | 1575 |
| 2630 | 2430 | 130 | 147 | 168 | 272 | 405 | 590 | 820 | 1545 | 1625 |
| 2680 | 2480 | 129 | 146 | 166 | 267 | 399 | 577 | 793 | 1595 | 1675 |
| 2730 | 2530 | 128 | 144 | 165 | 262 | 394 | 564 | 766 | 1645 | 1725 |
| 2780 | 2580 | 127 | 143 | 163 | 257 | 388 | 551 | 739 | 1695 | 1775 |
| 2830 | 2630 | 127 | 142 | 162 | 253 | 383 | 539 | 726 | 1745 | 1825 |
| 2880 | 2680 | 126 | 141 | 160 | 249 | 377 | 527 | 714 | 1795 | 1875 |
| 2930 | 2730 | 126 | 140 | 159 | 245 | 372 | 514 | 701 | 1845 | 1925 |
| 2980 | 2780 | 125 | 139 | 157 | 241 | 366 | 502 | 688 | 1895 | 1975 |

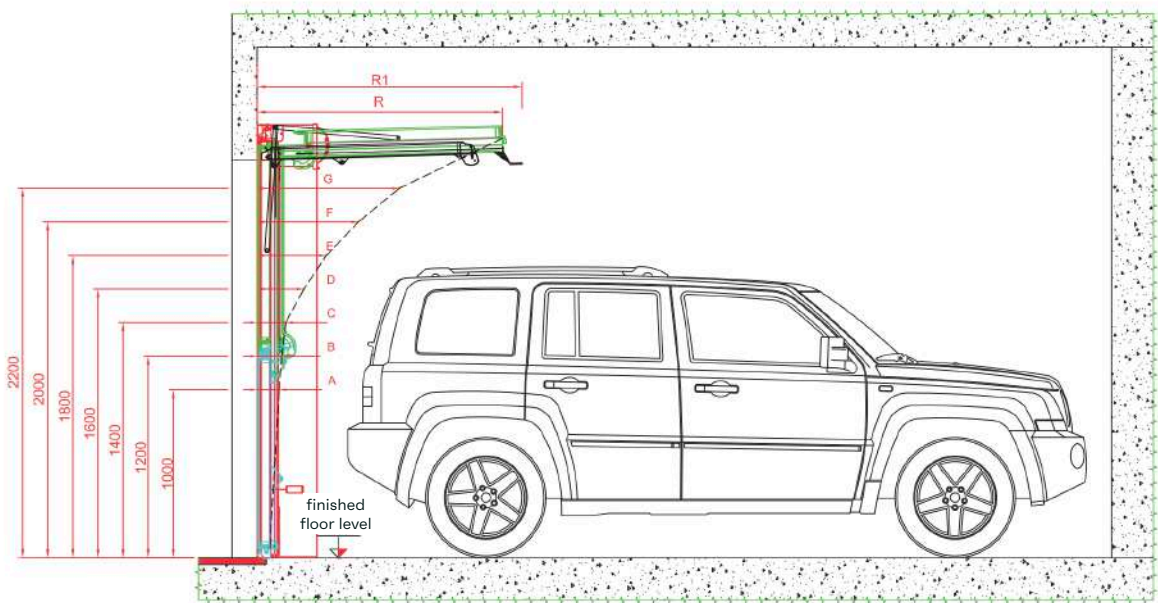
Vertical section - general

Vertical section - detail

Encumbrances Overlap Classic Box model
measures in mm

| Over all frame | Door opening | R | R1 |
|----------------|--------------|------|------|
| 2130 | 1930 | 1270 | 1350 |
| 2180 | 1980 | 1320 | 1400 |
| 2230 | 2030 | 1370 | 1450 |
| 2280 | 2080 | 1370 | 1450 |
| 2330 | 2130 | 1370 | 1450 |
| 2380 | 2180 | 1420 | 1500 |
| 2430 | 2230 | 1420 | 1500 |
| 2480 | 2280 | 1445 | 1525 |
| 2530 | 2330 | 1470 | 1550 |
| 2580 | 2380 | 1495 | 1575 |
| 2630 | 2430 | 1520 | 1600 |
| 2680 | 2480 | 1545 | 1625 |
| 2730 | 2530 | 1570 | 1650 |
| 2780 | 2580 | 1845 | 1925 |
| 2830 | 2630 | 1895 | 1975 |
| 2880 | 2680 | 1895 | 1975 |
| 2930 | 2730 | 1920 | 2000 |
| 2980 | 2780 | 1945 | 2025 |

Encumbrances Overlap New Plana 75mm
measures in mm

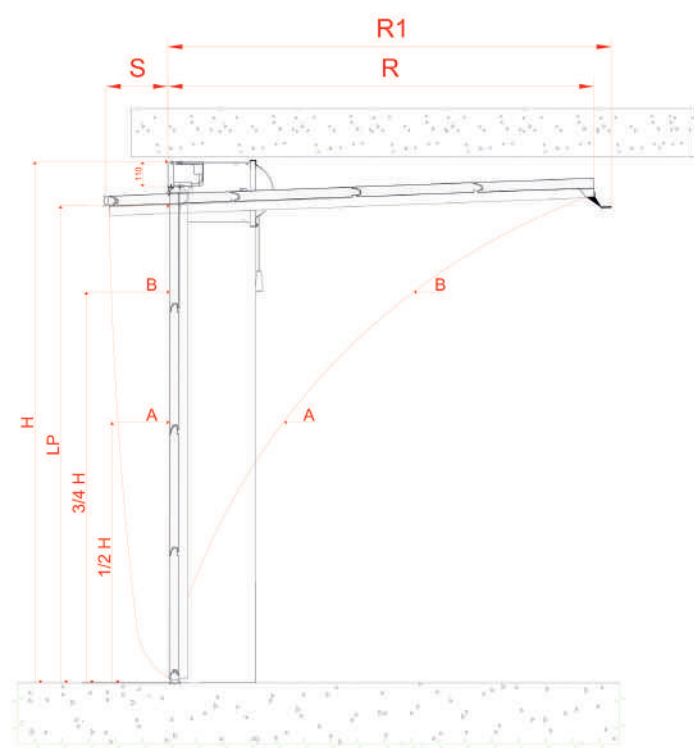


Encumbrances Overlap New Plana 40mm measures in mm

| Over all frame | Door opening | R | R1 |
|----------------|--------------|------|------|
| 2130 | 1930 | 1270 | 1350 |
| 2180 | 1980 | 1320 | 1400 |
| 2230 | 2030 | 1370 | 1450 |
| 2280 | 2080 | 1370 | 1450 |
| 2330 | 2130 | 1370 | 1450 |
| 2380 | 2180 | 1420 | 1500 |
| 2430 | 2230 | 1420 | 1500 |
| 2480 | 2280 | 1445 | 1525 |
| 2530 | 2330 | 1470 | 1550 |
| 2580 | 2380 | 1495 | 1575 |
| 2630 | 2430 | 1520 | 1600 |
| 2680 | 2480 | 1545 | 1625 |
| 2730 | 2530 | 1570 | 1650 |
| 2780 | 2580 | 1595 | 1675 |
| 2830 | 2630 | 1620 | 1700 |
| 2880 | 2680 | 1645 | 1725 |
| 2930 | 2730 | 1670 | 1750 |
| 2980 | 2780 | 1695 | 1775 |

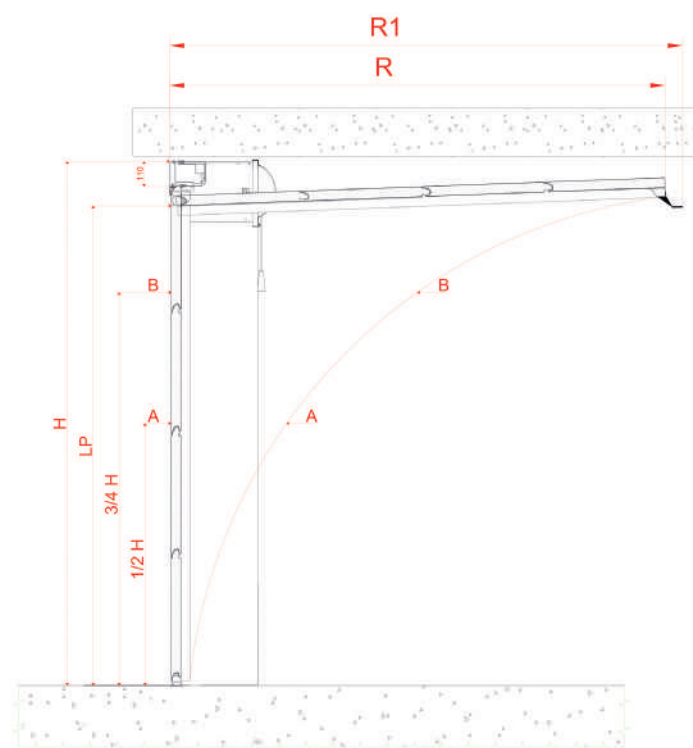
| Outer frame | Door opening | A | B | C | D | E | F | G | R | R1 |
|-------------|--------------|------|------|------|------|------|------|------|------|------|
| | | 1000 | 1200 | 1400 | 1600 | 1800 | 2000 | 2000 | | |
| 2130 | 1895 | 184 | 229 | 354 | 522 | 760 | / | / | 1270 | 1350 |
| 2180 | 1945 | 182 | 221 | 335 | 495 | 720 | / | / | 1320 | 1400 |
| 2230 | 1995 | 180 | 212 | 316 | 467 | 681 | / | / | 1370 | 1450 |
| 2280 | 2045 | 177 | 204 | 296 | 440 | 641 | / | / | 1370 | 1450 |
| 2330 | 2095 | 175 | 195 | 277 | 412 | 601 | 811 | / | 1370 | 1450 |
| 2380 | 2145 | 173 | 193 | 262 | 392 | 571 | 776 | / | 1420 | 1500 |
| 2430 | 2195 | 172 | 190 | 248 | 373 | 540 | 741 | / | 1420 | 1500 |
| 2480 | 2245 | 170 | 188 | 233 | 353 | 510 | 705 | / | 1445 | 1525 |
| 2530 | 2295 | 168 | 185 | 218 | 333 | 479 | 670 | 931 | 1470 | 1550 |
| 2580 | 2345 | 166 | 183 | 205 | 313 | 447 | 638 | 882 | 1495 | 1575 |
| 2630 | 2395 | 165 | 182 | 203 | 307 | 440 | 625 | 855 | 1520 | 1600 |
| 2680 | 2445 | 164 | 181 | 201 | 302 | 434 | 612 | 828 | 1545 | 1625 |
| 2730 | 2495 | 163 | 179 | 200 | 297 | 429 | 599 | 801 | 1570 | 1650 |
| 2780 | 2545 | 162 | 178 | 198 | 292 | 423 | 586 | 774 | 1595 | 1675 |
| 2830 | 2595 | 162 | 177 | 197 | 288 | 418 | 574 | 761 | 1620 | 1700 |
| 2880 | 2645 | 161 | 176 | 195 | 284 | 412 | 562 | 749 | 1645 | 1725 |
| 2930 | 2695 | 161 | 175 | 194 | 280 | 407 | 549 | 736 | 1670 | 1750 |
| 2980 | 2745 | 160 | 174 | 192 | 276 | 401 | 537 | 723 | 1695 | 1775 |

Overlap door clearance - Protruding
measures in mm



| H | A-A | 1/2 H | B-B | 3/4 H | S | R | R1 | LP* |
|--|-----|-------|-----|-------|-----|------|------|------|
| 1980 | 360 | 990 | 860 | 1480 | 190 | 1660 | 1740 | 1735 |
| 2030 | 360 | 1015 | 860 | 1520 | 190 | 1710 | 1790 | 1785 |
| 2080 | 360 | 1040 | 860 | 1560 | 240 | 1710 | 1790 | 1830 |
| 2130 | 360 | 1065 | 860 | 1600 | 240 | 1760 | 1840 | 1880 |
| 2180 | 360 | 1090 | 860 | 1630 | 290 | 1760 | 1840 | 1925 |
| 2230 | 360 | 1115 | 860 | 1670 | 290 | 1810 | 1890 | 1975 |
| 2280 | 360 | 1140 | 860 | 1710 | 340 | 1810 | 1890 | 2020 |
| 2330 | 360 | 1165 | 860 | 1750 | 340 | 1860 | 1940 | 2070 |
| 2380 | 360 | 1190 | 860 | 1790 | 390 | 1860 | 1940 | 2115 |
| 2430 | 360 | 1215 | 860 | 1820 | 390 | 1910 | 1990 | 2165 |
| 2480 | 360 | 1240 | 860 | 1860 | 440 | 1910 | 1990 | 2210 |
| 2530 | 360 | 1265 | 860 | 1900 | 440 | 1960 | 2040 | 2260 |
| 2580 | 360 | 1290 | 860 | 1940 | 490 | 1960 | 2040 | 2305 |
| 2630 | 360 | 1315 | 860 | 1970 | 490 | 2010 | 2090 | 2355 |
| 2680 | 360 | 1340 | 860 | 2010 | 540 | 2010 | 2090 | 2400 |
| 2730 | 360 | 1365 | 860 | 2050 | 540 | 2060 | 2140 | 2450 |
| 2780 | 360 | 1390 | 910 | 2090 | 590 | 2060 | 2140 | 2495 |
| 2830 | 360 | 1415 | 910 | 2120 | 590 | 2110 | 2190 | 2545 |
| 2880 | 360 | 1440 | 910 | 2160 | 640 | 2110 | 2190 | 2590 |
| 2930 | 360 | 1465 | 910 | 2200 | 640 | 2160 | 2240 | 2640 |
| 2980 | 360 | 1490 | 910 | 2230 | 690 | 2160 | 2240 | 2695 |
| *with pedestrian decreases door LP by 20mm | | | | | | | | |

Overlap door clearance - Not Protruding
measures in mm



| H | A-A | 1/2 H | B-B | 3/4 H | R | R1 | LP* |
|--|-----|-------|------|-------|------|------|------|
| 1980 | 560 | 990 | 1050 | 1480 | 1930 | 2010 | 1685 |
| 2030 | 570 | 1015 | 1075 | 1520 | 1980 | 2060 | 1735 |
| 2080 | 580 | 1040 | 1100 | 1560 | 2030 | 2110 | 1785 |
| 2130 | 590 | 1065 | 1125 | 1600 | 2080 | 2160 | 1835 |
| 2180 | 600 | 1090 | 1150 | 1630 | 2130 | 2210 | 1885 |
| 2230 | 610 | 1115 | 1175 | 1670 | 2180 | 2260 | 1935 |
| 2280 | 620 | 1140 | 1200 | 1710 | 2230 | 2310 | 1985 |
| 2330 | 630 | 1165 | 1225 | 1750 | 2280 | 2360 | 2035 |
| 2380 | 640 | 1190 | 1250 | 1790 | 2330 | 2410 | 2085 |
| 2430 | 650 | 1215 | 1275 | 1820 | 2380 | 2460 | 2135 |
| 2480 | 660 | 1240 | 1300 | 1860 | 2430 | 2510 | 2185 |
| 2530 | 670 | 1265 | 1325 | 1900 | 2480 | 2560 | 2235 |
| 2580 | 680 | 1290 | 1350 | 1940 | 2530 | 2610 | 2285 |
| 2630 | 690 | 1315 | 1375 | 1970 | 2580 | 2660 | 2335 |
| 2680 | 700 | 1340 | 1330 | 2010 | 2600 | 2710 | 2385 |
| *with pedestrian decreases door LP by 20mm | | | | | | | |

Standard features

- Frame made by 2mm thick metal sheet steel, lacquered white RAL 9016 or RAL 7016. *(for doors to be installed in highly aggressive/corrosive natural environments, we recommend using the AISI 316 stainless steel frame and aluminum panels)*
- Lateral double counterweight system.
- Leaf made by sandwich panels 40mm or 75mm thick with polyurethane foam, horizontally oriented and mechanically joined.
- Bottom seal in EPDM rubber with draining profile Anti-entrapment perimeter seal in EPDM rubber, water and wind proof.

Technical specifications

- Trackless garage door with door opening in 2 overlapping sections (OVERLAP) - Un and Over garage door (OVERBAS)
- Thermal transmittance of the door $U=1,30 \text{ W/m}^2\text{K}^*$
(NEW PLANA 75mm).
- Thermal transmittance of the door $U=1,5 \text{ W/m}^2\text{K}^*$
(CLASSIC, NEW PLANA 40mm).

*values obtained for a door without windows and grids with behind wall installation). Excellent performance in terms of acoustics insulation and air/water/wind resistance.

Motor OverMotion 2018 hidden inside the headbar.
Receivers and remote controls are not included (optionals). In case there is not a secondary access to the garage, it is compulsory to order a double handle.

Warranty

In addition to the 2-years legal warranty, Delta Overlap supports its customers over time offering them an additional coverage period for a total of:

10 years
on metal parts

In accordance with the recommendations in the Delta Overlap sale conditions and in the installation and owner's manual.



DeltaOverlap SRL in order to improve the quality of its doors, reserves the right to make changes to its products at any time, to improve customers satisfaction. The images in this brochure are for the purposes of representing the product and are purely indicative and not binding.



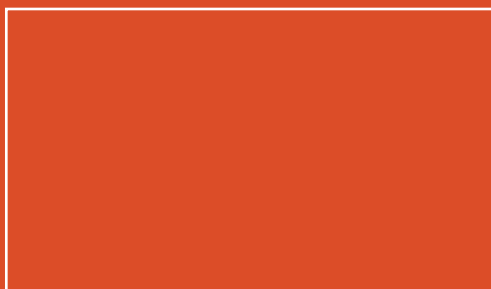
Overlap srl

Tel. +39 0827 215199

ITALIA



deltaoverlap.com



Delta Overlap Dealer